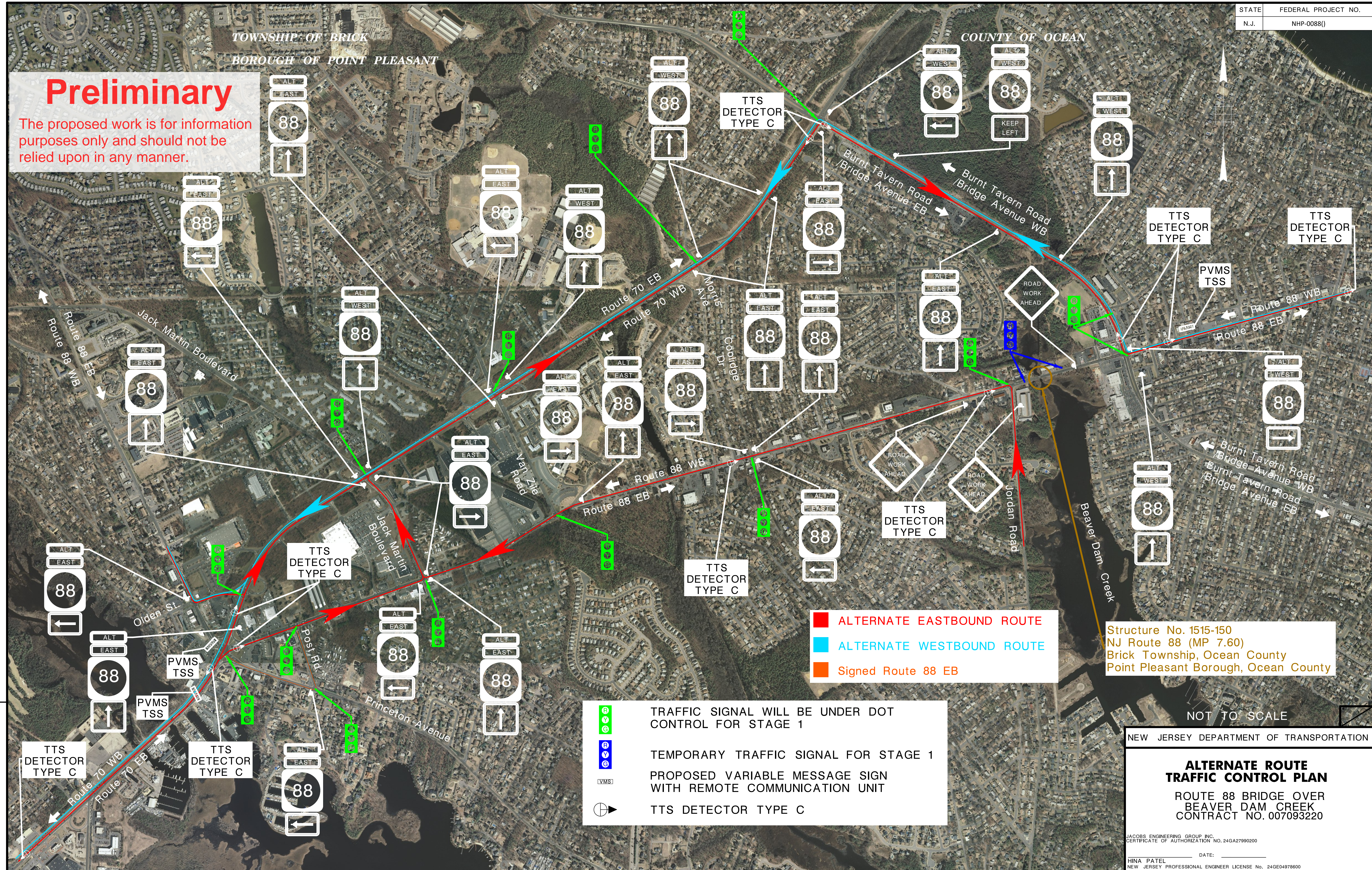


TOWNSHIP OF BRICK
BOROUGH OF POINT PLEASANT

COUNTY OF OCEAN

Preliminary
The proposed work is for information purposes only and should not be relied upon in any manner.



■ ALTERNATE EASTBOUND ROUTE
■ ALTERNATE WESTBOUND ROUTE
■ Signed Route 88 EB

Ⓡ TRAFFIC SIGNAL WILL BE UNDER DOT CONTROL FOR STAGE 1
Ⓡ TEMPORARY TRAFFIC SIGNAL FOR STAGE 1
PVMS PROPOSED VARIABLE MESSAGE SIGN WITH REMOTE COMMUNICATION UNIT
Ⓡ TTS DETECTOR TYPE C

Structure No. 1515-150
NJ Route 88 (MP 7.60)
Brick Township, Ocean County
Point Pleasant Borough, Ocean County

NOT TO SCALE

NEW JERSEY DEPARTMENT OF TRANSPORTATION

**ALTERNATE ROUTE
TRAFFIC CONTROL PLAN**
ROUTE 88 BRIDGE OVER
BEAVER DAM CREEK
CONTRACT NO. 007093220

JACOBS ENGINEERING GROUP INC.
CERTIFICATE OF AUTHORIZATION NO. 24GA27990200

HINA PATEL DATE: _____
NEW JERSEY PROFESSIONAL ENGINEER LICENSE No. 24GE04978600